



SAKSHAM

AO16 [S850-16C00V16G01GIND]

16 Channel Analog Output Module

Analog output modules are vital in PLC systems, enabling precise control and regulation of devices and machinery. Selecting the right module depends on application needs, signal integrity, and integration complexity. When properly implemented, they enhance system efficiency, reliability, and productivity. This 16-channel analog output module offers superior performance with complete galvanic isolation across all channels, ensuring outstanding noise immunity and stable operation even in demanding industrial environments, making it ideal for precision control applications.

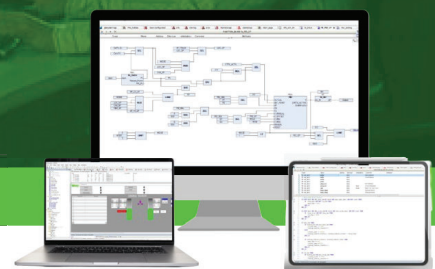
- No. of Analog Outputs : 16 Channels
- Type of Analog Output : 0/4-20 mA
- Released Date : From July 22
- Mounting : Base Unit TBUS-PPPPPPPP
- Galvanic Isolation : Yes
- Galvanic Isolation Group : 16
- Channels In One Group : 1 Channel/Group
- Function Of Diagnostics : Available
- Insulation Tested With : 370 V DC
- Field Connection : 37-Pin D-Sub Female Connector
- Power Connection : 5 Pin Phoenix Plug-In Screw Connector (De-Coded)
- Cable Length Max : 500 m, 1.0 mm² shielded cable
- Dimension (W x H x D) : 25 x 122 x 115 mm
- Weight : 100 g approx

Mandatory Accessories

- TBUS
- Power TB

Accessories

- Analog Output FTA
- Prefab Cable



Hot Swappable



Fast and Easy Integration



IEC 61131-3



TPW INDUSTRIES LLP: Plot No. 33, Kh No. 620 & 621, Surya City, Opposite Indian Oil Petrol Pump, Takrohi, Indira Nagar, Lucknow (226016)
 For Further Details - +919455730147 | +919935837444 | jshtech@jshtech.in
 Visit Us: www.tpw-saksham.com

TPW | TPW INDUSTRIES LLP

General Information

| | |
|--------------------------|-----------------------------|
| No. of Analog Outputs | : 16 channels |
| Type of Analog Outputs | : 0/4-20 mA |
| Released Date | : From July 22 |
| Firmware Version | : 1.00.001 |
| Firmware Update Possible | : Yes |
| Engineering Software | : CODESYS V3.5 SP19 & above |
| Mounting | : Base Unit TBUS-PPPPPPP |

Isolation & Protection

| | |
|--------------------------------|---|
| Galvanic Isolation | : Yes |
| Galvanic Isolation Groups | : 16 Groups |
| Channel In One Groups | : 1 Channel/Groups |
| Input Short-Circuit Protection | : Yes, For Each Channel (For mA Channel only) |
| Input Over-Current Protection | : Yes (40 mA) |

Power Supply

| | |
|---------------------------------------|--|
| Power Supply From | : Top Side De-Coded Plug-In Screw Terminal |
| Normal Supply Voltage | : 24 V DC |
| Low Supply Voltage | : 21.6 V DC |
| High Supply Voltage | : 26.5 |
| Reverse Polarity Protection | : Yes |
| Input Current | : 0.5 A |
| Input Current Per Channel Permissible | : 25 mA |
| Transmitter Power | : Yes |
| Power Loss | : Less than 1 W |
| Load Resistance | : 370 Ω, Max |

Range

| | |
|--------------|------------|
| Output Range | : 0-20 mA |
| Output Range | : 4-20 mA |
| Range | : Scalable |

Oscillation Time

| | |
|-----------------|----------|
| Resistive Load | : 0.5 ms |
| Capacitive Load | : 1 ms |
| Inductive Load | : 1 ms |

Connection of Actuator

| | |
|----------------------------------|-------|
| Two Wire Connection, Current O/P | : Yes |
|----------------------------------|-------|

Configuration In Running

| | |
|-------------------------|-------|
| Parameterization in Run | : Yes |
| Calibration in Run | : Yes |

Error

| | |
|------------------------------|----------------------|
| Linearity Error | : 0.1% (Input Range) |
| Operational Error | : 0.5% (Input Range) |
| Basic Error | : 0.3% (Input Range) |
| Substitute Value Can Applied | : Yes |
| Crosstalk Between Outputs | : -50 db |

Hardware Configuration

| | |
|---------------------------|-------|
| Automatic Encoding | : No |
| Mechanical Coding Element | : Yes |

Alarm

| | |
|------------------|-------|
| Diagnostic Alarm | : Yes |
| Limit Alarm | : Yes |

Diagnostic

| | |
|------------------------------|-------------|
| Function of Diagnostic | : Available |
| Diagnostic Alarm | : Yes |
| Module Fuse Blown Indication | : Yes |

Diagnostic Messages

| | |
|---------------------|------|
| Wire-Break | : No |
| Short-Circuit | : No |
| Channel Diagnostics | : No |

LED

| | |
|--------------------------------------|-------|
| Power Indication | : Yes |
| Channel Status | : No |
| Channel Diagnostics (Wire-Break) | : No |
| Module Diagnostics (Back-Plane Comm) | : Yes |

Potential Separation

| | |
|--|--------------------------|
| Separation Between Channel | : Yes (Groups Isolation) |
| Separation Between Backplane | : Yes |
| Separation Between Channel and System Power Supply | : Yes |
| Insulation Tested With | : 370 V DC |

Ambient Condition

| | |
|-------------------------|--------|
| Horizontal Installation | : 0°C |
| Horizontal Installation | : 60°C |
| Vertical Installation | : 0°C |
| Vertical Installation | : 60°C |

Connection

| | |
|------------------|--|
| Field Connection | : 37-Pin D-Sub Female Connector |
| Power Connection | : 5 Pin Phoenix Plug-In Screw Connector (De-Coded) |

Other Information

| | |
|--------------------------|---|
| Cable Length Max. | : 500 m, 1.0 mm ² shielded cable |
| Address Space per Module | : 32 Bytes |
| Dimensions (W x H x D) | : 25 x 122 x 115 mm |
| Weight | : 100g Approx |