



SAKSHAM

AO16 [S850-16C00V16G01GINDC]

16 Channel Analog Output Module

Analog output modules are vital in PLC systems, enabling precise control and regulation of devices and machinery. Selecting the right module depends on application needs, signal integrity, and integration complexity. When properly implemented, they enhance system efficiency, reliability, and productivity. This 16-channel analog output module offers superior performance with complete galvanic isolation across all channels, ensuring outstanding noise immunity and stable operation even in demanding industrial environments, making it ideal for precision control applications.

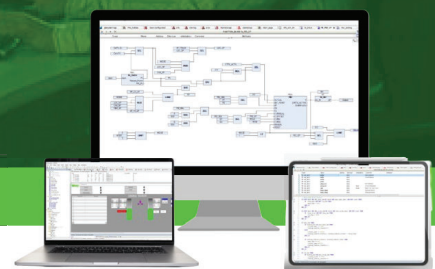
- No. of Analog Outputs : 16 Channels
- Type of Analog Output : 0/4-20 mA
- Released Date : From July 22
- Mounting : Base Unit TBUS-PPPPPPP
- Galvanic Isolation : Yes
- Galvanic Isolation Group : 16
- Channels In One Group : 1 Channel/Group
- Function Of Diagnostics : Available
- Insulation Tested With : 370 V DC
- Field Connection : 37-Pin D-Sub Female Connector
- Power Connection : 5 Pin Phoenix Plug-In Screw Connector (De-Coded)
- Cable Length Max : 500 m, 1.0 mm² shielded cable
- Dimension (W x H x D) : 25 x 122 x 115 mm
- Weight : 100 g approx
- Conformal Coating : G1, G2 & G3

Mandatory Accessories

- TBUS
- Power TB

Accessories

- Analog Output FTA
- Prefab Cable



Hot Swappable



Fast and Easy Integration



IEC 61131-3



TPW INDUSTRIES LLP: Plot No. 33, Kh No. 620 & 621, Surya City, Opposite Indian Oil Petrol Pump, Takrohi, Indira Nagar, Lucknow (226016)
 For Further Details - +919455730147 | +919935837444 | jshtech@jshtech.in
 Visit Us: www.tpw-saksham.com

TPW | TPW INDUSTRIES LLP

General Information

No. of Analog Outputs	: 16 channels
Type of Analog Outputs	: 0/4-20 mA
Released Date	: From July 22
Firmware Version	: 1.00.001
Firmware Update Possible	: Yes
Engineering Software	: CODESYS V3.5 SP19 & above
Mounting	: Base Unit TBUS-PPPPPPP

Isolation & Protection

Galvanic Isolation	: Yes
Galvanic Isolation Groups	: 16 Groups
Channel In One Groups	: 1 Channel/Groups
Input Short-Circuit Protection	: Yes, For Each Channel (For mA Channel only)
Input Over-Current Protection	: Yes (40 mA)

Power Supply

Power Supply From	: Top Side De-Coded Plug-In Screw Terminal
Normal Supply Voltage	: 24 V DC
Low Supply Voltage	: 21.6 V DC
High Supply Voltage	: 26.5
Reverse Polarity Protection	: Yes
Maximum Current	: 350 mA
Current Per Channel Permissible	: 21.5 mA
Power Loss	: Less than 1 W
Load Resistance	: 370 Ω, Max

Range

Output Range	: 0-20 mA
Output Range	: 4-20 mA
Range	: Scalable

Oscillation Time

Resistive Load	: 0.5 ms
Capacitive Load	: 1 ms
Inductive Load	: 1 ms

Connection of Actuator

Two Wire Connection, Current O/P	: Yes
----------------------------------	-------

Configuration In Running

Parameterization in Run	: Yes
Calibration in Run	: Yes

Hardware Configuration

Automatic Encoding	: No
Mechanical Coding Element	: Yes

Error

Linearity Error	: 0.1% (Input Range)
Operational Error	: 0.5% (Input Range)
Basic Error	: 0.3% (Input Range)
Substitute Value Can Applied	: Yes
Crosstalk Between Outputs	: -50 db

Alarm

Diagnostic Alarm	: Yes
Limit Alarm	: Yes

Diagnostic

Function of Diagnostic	: Available
Diagnostic Alarm	: Yes
Module Fuse Blown Indication	: Yes

Diagnostic Messages

Wire-Break	: No
Short-Circuit	: No
Channel Diagnostics	: No

LED

Power Indication	: Yes
Channel Status	: No
Channel Diagnostics (Wire-Break)	: No
Module Diagnostics (Back-Plane Comm)	: Yes

Potential Separation

Separation Between Channel	: Yes (Groups Isolation)
Separation Between Backplane	: Yes
Separation Between Channel and System Power Supply	: Yes
Insulation Tested With	: 500 V DC

Ambient Condition

Horizontal Installation	: 0°C
Horizontal Installation	: 60°C
Vertical Installation	: 0°C
Vertical Installation	: 60°C

Connection

Field Connection	: 37-Pin D-Sub Female Connector
Power Connection	: 5 Pin Phoenix Plug-In Screw Connector (De-Coded)

Other Information

Cable Length Max.	: 500 m, 1.0 mm ² shielded cable
Address Space per Module	: 32 Bytes
Dimensions (W x H x D)	: 25 x 122 x 115 mm
Weight	: 100g Approx

Environmental Protection

Conformal Coating	: G1, G2 and G3
-------------------	-----------------