



# SAKSHAM

## DI16 [ S810-16SK02G08GINDCC ]

### 16 Channel Digital Input Module

Digital inputs are key players in a variety of industrial applications, making them super important for today's automation systems. Our digital input modules work hand-in-hand with PLCs to manage all sorts of field components effortlessly. They pick up signals from field sensors, switches, and other devices, ensuring you get accurate and timely data every time. With 16 channels divided into 2 groups of 8 channels each, our digital input modules are designed for optimal performance and reliability in your industrial automation projects.

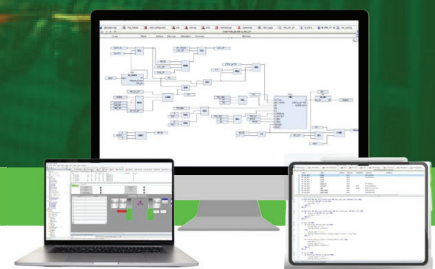
- No. of Digital Inputs : 16 Channels
- Released Date : From July 22
- Mounting : Base Unit TBUS-PPPPPPPP
- Galvanic Isolation : Yes
- Galvanic Isolation Group : 2
- Channels In One Group : 8 Channel/Group
- Digital Inputs : Yes
- For "0" Signal : Up to 5 V DC
- For "1" Signal : 15 V DC To 28 V DC
- Field Connection : 37-Pin D-Sub Female Connector
- Power Connection : 5 Pin Phoenix Plug-In Screw Connector (De-Coded)
- Cable Length Max : 500 m, 1.0 mm<sup>2</sup> shielded cable
- Dimension (W x H x D) : 25 x 122 x 115 mm
- Weight : 140 g approx
- Conformal Coating : G1, G2 & G3

#### Mandatory Accessories

- TBUS
- Power TB

#### Accessories

- Passive FTA
- Prefab Cable



Hot Swappable



Fast and Easy Integration



IEC 61131-3



TPW INDUSTRIES LLP: Plot No. 33, Kh No. 620 & 621, Surya City, Opposite Indian Oil Petrol Pump, Takrohi, Indira Nagar, Lucknow (226016)  
 For Further Details - +919455730147 | +919935837444 | jshtech@jshtech.in  
 Visit Us: www.tpw-saksham.com

**TPW** | TPW INDUSTRIES LLP

### General Information

No. of Digital Inputs	: 16 Channels
Released Date	: From July 22
Firmware Version	: 1.00.001
Firmware Update Possible	: Yes
Engineering Software	: CODESYS V3.5 SP19 & above
Mounting	: Base Unit TBUS-PPPPPPP

### Isolation & Protection

Galvanic Isolation	: Yes
Galvanic Isolation Groups	: 02 Groups
Channel In One Groups	: 8 Channel/Groups

### Mode of Operation

Digital Inputs	: Yes
Counter	: No

### Power Supply

Power Supply From	: Top Side De-Coded Plug-In Screw Terminal
Normal Supply Voltage	: 24 V DC
Low Supply Voltage	: 21.6 V DC
High Supply Voltage	: 26.5
Reverse Polarity Protection	: Yes
Maximum Current	: 100 mA
Power Loss	: 0.75 W

### Hardware Configuration

Automatic Encoding	: No
Mechanical Coding Element	: Yes

### Digital Inputs

Number of digital Inputs	: 32
Digital Input Parameterizable	: Yes
Source/Sink Input	: Sink/Source
Input Characteristics Curve as per IEC-61131	: Yes

### Input Voltage

Rated Voltage	: 24 V DC
For 0 Signal	: Up to 5 V DC
For 1 Signal	: 15 V DC To 28 V DC

### Input Current

For "1" Signal	: 2 mA (max 20 mA)
----------------	--------------------

### Delay In Input For Rated Voltage

Parameterizable	: Yes
From 0 To 1	: Max 0.5 ms
From 1 To 0	: Max 15 ms

### LED

Power Indication	: Yes
Channel Status	: Yes
Fuse Blown	: Yes
Back-Plane Communication	: Yes

### Potential Separation

Separation Between Channel	: Yes in Groups of 8 Channel
Separation Between Backplane	: Yes
Separation Between Channel and System Power Supply	: Yes
Insulation Tested With	: 500 V DC

### Ambient Condition

Horizontal Installation	: 0°C
Horizontal Installation	: 60°C
Vertical Installation	: 0°C
Vertical Installation	: 60°C

### Connection

Field Connection	: 37-Pin D-Sub Female Connector
Power Connection	: 5 Pin Phoenix Plug-In Screw Connector (De-Coded)

### Other Information

Cable Length Max.	: 500 m
Address Space per Module	: 2 Bytes
Dimensions (W x H x D)	: 25 x 122 x 115 mm
Weight	: 140g Approx

### Environmental Protection

Conformal Coating	: G1, G2 and G3
-------------------	-----------------