

SAKSHAM

DO32 [S820-32SR04G08GINDCC]

32 Channel Digital Output Module

The digital output module is a key player in any PLC system, turning digital input commands into important digital output signals. These outputs play a vital role in managing actuators, motors, lights, alarms, and other devices that need external control, all driven by clever logic sequences stored in the PLC's memory. By selecting the right digital output module, you can ensure top-notch performance and accuracy, along with great stability and safety for all your industrial automation projects. Its all about making your work easier and more efficient!

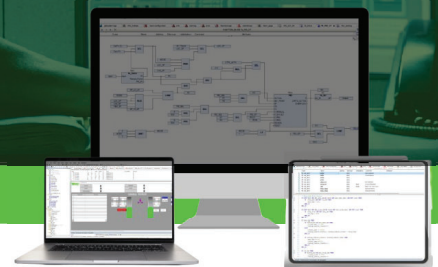
- No. of Digital Outputs : 32 Channels
- Released Date : From July 22
- Mounting : Base Unit TBUS-PPPPPPPP
- Galvanic Isolation : Yes
- Galvanic Isolation Group : 4
- Channels In One Group : 8 Channel/Group
- Digital Outputs : Yes
- Current Sinking : No
- Current Sourcing : Yes
- Field Connection : 37-Pin D-Sub Female Connector
- Power Connection : 5 Pin Phoenix Plug-In Screw Connector (De-Coded)
- Cable Length Max : 500 m, 1.0 mm² shielded cable
- Dimension (W x H x D) : 25 x 122 x 115 mm
- Weight : 145 g approx
- Conformal Coating : G1, G2 & G3

Mandatory Accessories

- TBUS
- Power TB

Accessories

- Passive FTA
- Prefab Cable



Hot Swappable



Fast and Easy Integration



IEC 61131-3



TPW INDUSTRIES LLP: Plot No. 33, Kh No. 620 & 621, Surya City, Opposite Indian Oil Petrol Pump, Takrohi, Indira Nagar, Lucknow (226016)
For Further Details - +919455730147 | +919935837444 | jshtech@jshtech.in
Visit Us: www.tpw-saksham.com

TPW | TPW INDUSTRIES LLP

General Information

No. of Digital Outputs	: 32 Channels
Released Date	: From July 22
Firmware Version	: 1.00.001
Firmware Update Possible	: Yes
Engineering Software	: CODESYS V3.5 SP19 & above
Mounting	: Base Unit TBUS-PPPPPPP

Isolation & Protection

Galvanic Isolation	: Yes
Galvanic Isolation Groups	: 4 Groups
Channel In One Groups	: 8 Channel/Groups

Mode of Operation

DO	: Yes
DO With Energy Saving Function	: No
PWM	: No

Power Supply

Power Supply From	: Top Side De-Coded Plug-In Screw Terminal
Normal Supply Voltage	: 24 V DC
Low Supply Voltage	: 21.6 V DC
High Supply Voltage	: 26.5
Reverse Polarity Protection	: Yes
Maximum Current	: 100 mA (Field Current not Included)
Power Loss	: 0.75 W

Hardware Configuration

Automatic Encoding	: No
Mechanical Coding Element	: Yes

Digital Output

Number of digital Inputs	: 32
Type of Digital Output	: Source Output
Current Sinking	: No
Current Sourcing	: Yes
Digital Output Parameterizable	: Yes
Short-Circuit Protection	: Yes
Response Threshold	: 1 A
Open Circuit Detection	: Yes
Controlling a Digital Output	: Yes
Switching Capacity To Resistive Load	: 0.5 A
Switching Capacity To Inductive Load	: 5 W

Output Current

For "1" Signal	: 0.5 A
For "1" Signal	: 0.1 mA

Delay In Output With Resistive Load

From 0 To 1	: Max 50 µs
From 1 To 0	: Max 100 µs

Parallel Switching of Two Outputs

Upgrading	: No
Redundant Control of Load	: Yes (Using Suitable FTA)

Total Current

Per Channel	: 0.5 A
Per Module	: 16 A

Switching Frequency

Resistive Load	: 100 Hz
Inductive Load	: 2 Hz
Lamp Load	: 10 Hz

Module Current As Horizontal Installation

30 Degree Celsius	: 16 A
40 Degree Celsius	: 14 A
50 Degree Celsius	: 12 A
60 Degree Celsius	: 8 A

Module Current As Vertical Installation

30 Degree Celsius	: 16 A
40 Degree Celsius	: 12 A
50 Degree Celsius	: 8 A

Diagnostic

Function of Diagnostics	: Yes
Diagnostic Alarm	: Available
Module Fuse Blown Indication	: Yes

Diagnostic Messages

Diagnostic Info Readable	: Yes
Supply Voltage Monitoring	: Yes
Groups Error	: Yes

LED

Power Indication	: Yes
Channel Status	: Yes
Channel Diagnostics	: No
Module Diagnostics	: Yes

Potential Separation

Separation Between Channel	: Yes In Groups of 8 channels
Separation Between Backplane	: Yes
Separation Between Channel and System Power Supply	: Yes
Insulation Tested With	: 500 V DC

Ambient Condition

Horizontal Installation	: 0°C
Horizontal Installation	: 60°C
Vertical Installation	: 0°C
Vertical Installation	: 60°C

Connection

Field Connection	: 37-Pin D-Sub Female Connector
Power Connection	: 5 Pin Phoenix Plug-In Screw Connector (De-Coded)

Other Information

Cable Length Max.	: 500 m
Address Space per Module	: 2 Bytes
Dimensions (W x H x D)	: 25 x 122 x 115 mm
Weight	: 140g Approx

Environmental Protection

Conformal Coating	: G1, G2 and G3
-------------------	-----------------